



Vernon Road, London, E3

BUTLER & STAG



Contemporary one bedroom seventh floor apartment set within a popular development in an ultra-convenient location just off the historic, vibrant Roman Road.



- Modern One Bedroom Apartment
- Smartly Presented Throughout
- Extensive Transport Options Nearby
- Furnished
- Seventh Floor with Private Balcony
- Ultra Convenient Location
- Close to Victoria Park
- Available from 8th April 2026

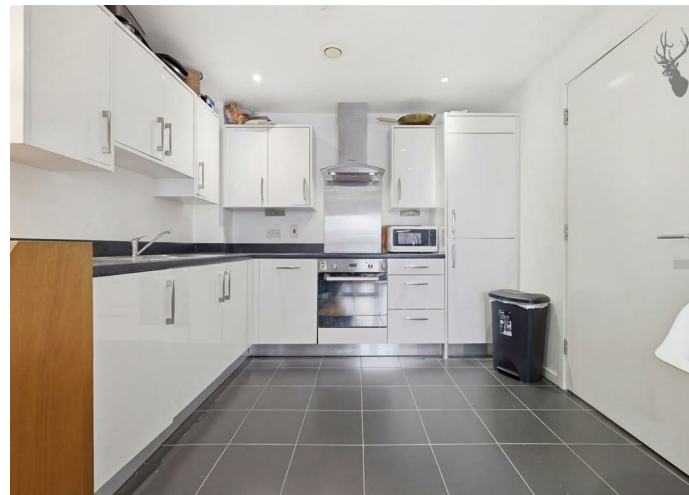
This smartly presented apartment is surrounded by a wide range of local amenities including a supermarket and a gym directly below, is only a short walk from the wonderful Victoria Park and is within easy reach of both Mile End and Bow Road underground stations.

The property features an open-plan kitchen / living space which leads out to a balcony with far-reaching views, a generously-sized double bedroom with fitted wardrobes and a modern bathroom. A hallway cupboard provides handy additional storage space.

William Beveridge House is a secure, modern and well-maintained block located adjacent to the beating heart of Bow, the renowned Roman Road.

Perfectly suited to a single professional or a couple, the property is offered furnished and is available from 8th April 2026.

EPC Rating B
Council Tax Band C

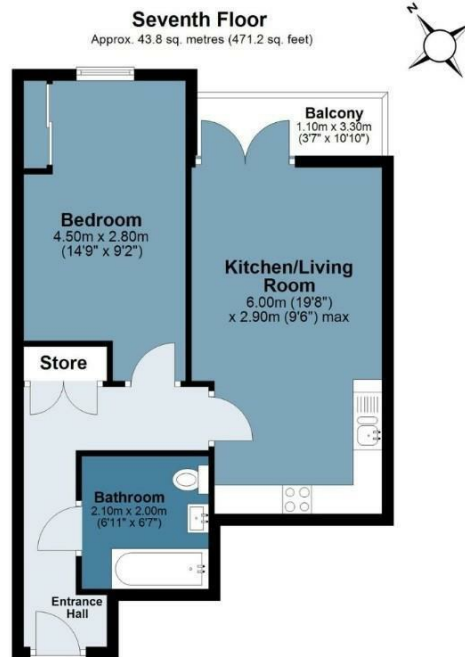




William Beveridge House

Approx. Gross Internal Area 43.8 sq. metres (471.2 sq. feet)

BUTLER & STAG



Measurements are approximate and for illustration purposes only. While we do not doubt the accuracy and completeness, we advise you conduct a careful independent assessment of the property to determine monetary value
© @modephotouk www.modephoto.co.uk

BUTLER & STAG

☎ 020 8102 1236

🏠 508 Roman Road, Bow, London, E3 5LU

✉ bow@butlerandstag.com

www.butlerandstag.uk

IMPORTANT NOTICE - These particulars have been prepared in good faith and they are not intended to constitute part of an offer or contract. We have not performed a structural survey on this property and the services, appliances and specific fittings have not been tested. All photographs, measurements, floor plans and distances referred to are given as a guide and should not be relied upon.